

1. Disassembly Procedures

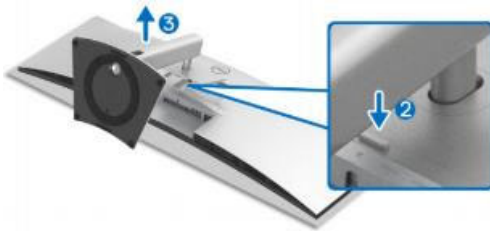
S1 Turn off power

S2 To remove the stand:

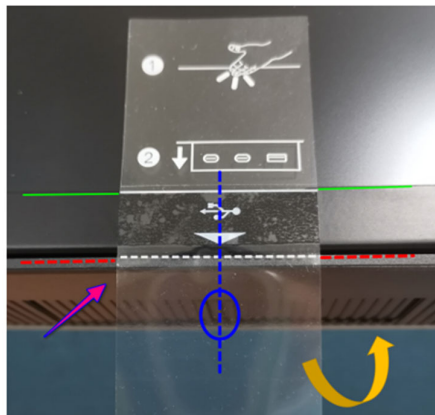
Place U4924DW monitor on U4919DW curve sponge jig

Press and hold the stand release button at the back of the display.

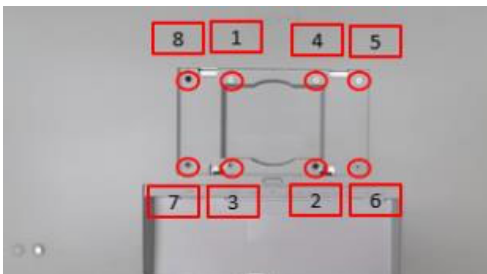
Lift the stand assembly up and away from the monitor



S3 Tear off "LBL USB" from the front bezel of panel gently



S4 Unlock 8 screws on Rear Cover

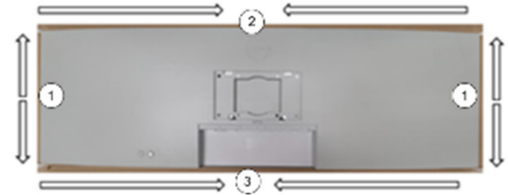


(Screw Torque: 8-10 Kgf)

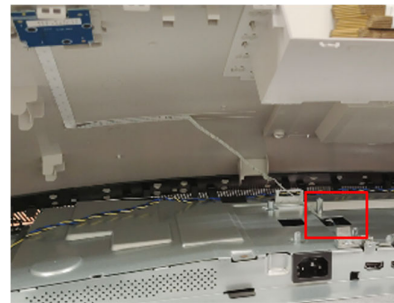
S5 Use hands or Bar Scraper to disassemble Rear Cover from Middle Frame

Notice the disassembly order:

Left Side/ Right Side=>Top Side=>Bottom Side

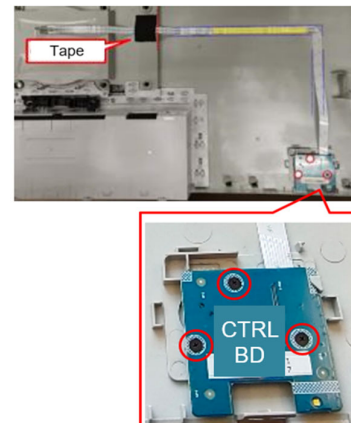


S6 Unplug "CTRL BD FFC" from I/F BD to take off Rear Cover



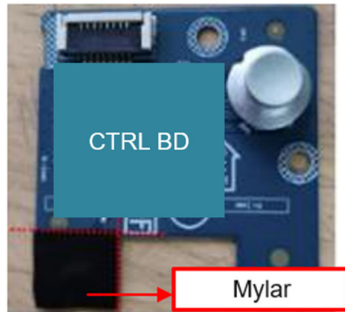
S7 Tear off a tape from Rear Cover
Tear off "CTRL BD FFC" from Rear Cover

Unlock 3 screws to disassemble "CTRL BD" from Rear Cover



(Screw Torque: 2.0+0.5 Kgf)

- S8** Tear off a mylar from CTRL BD

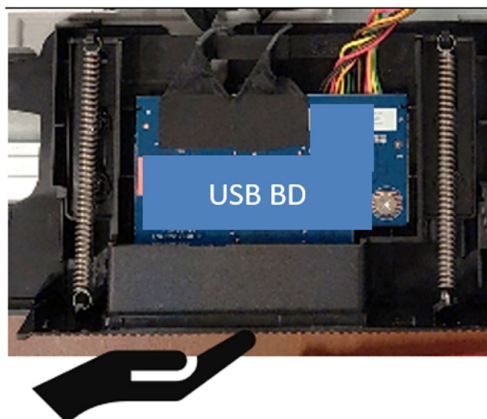


- S9** Unplug speaker wire from I/F BD
Tear off 7 tapes from speaker wire.
Unlock 8 screws to disassemble speaker from Middle Frame

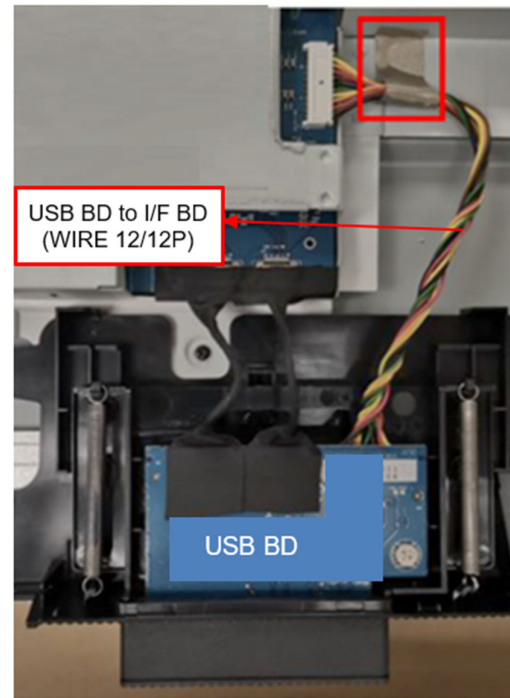


(Screw Torque: 5~6 Kgf)

- S10** Press up on the USB BD module to let it slide down.



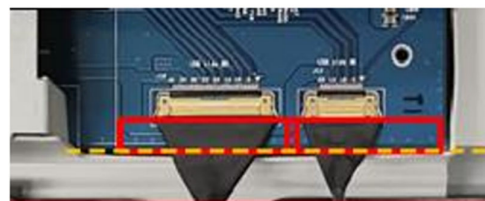
- S11** Tear off a tape from "WIRE 12/12P" and unplug it from I/F BD



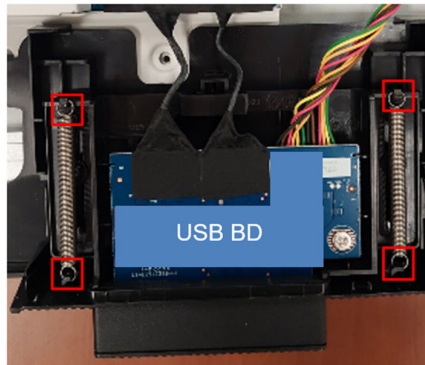
- S12** Tear off tapes from USB BD wires and I/F BD



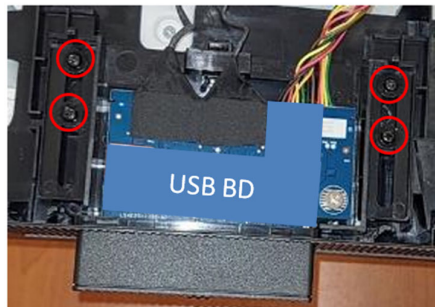
- S13** Unplug following USB BD wires from I/F BD



- S14** Disassemble 2 springs from Middle Frame

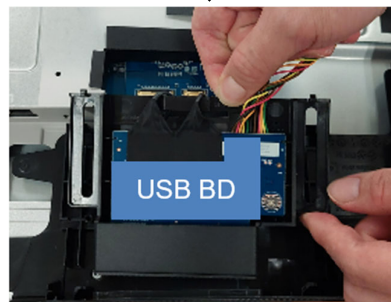
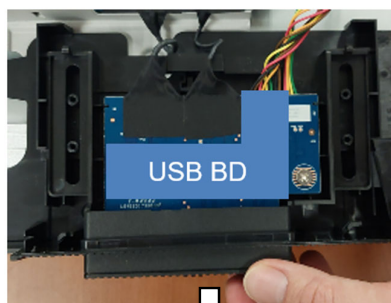


- S15** Unlock 4 screws to disassemble USB BD module from Middle Frame



(Screw Torque: 3.5~4.0 Kgf)

- S16** Take off USB BD Module from Middle Frame



- S17** Unplug 2 “LED Driver BD to Panel wires” from LED Driver BD



- S18** Unlock 7 screws to disassemble Main SHD

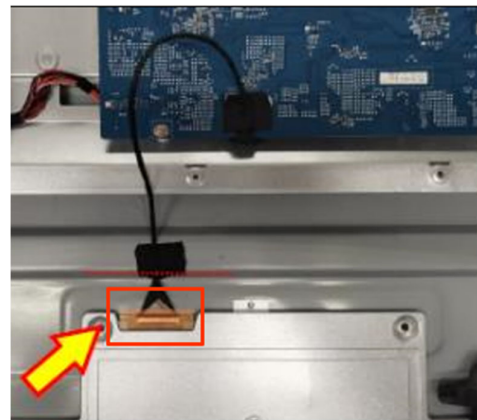


(Screw Torque: 4.5±0.5 Kgf)

- S19** Tear off yellow tape and acetate tape from “WIRE COAX EDP 60P”

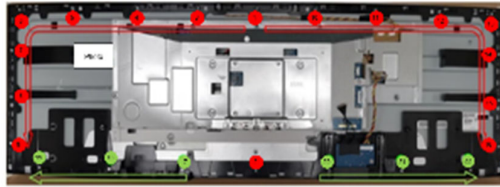
Unplug “WIRE COAX EDP 60P” from Panel

Take off Main SHD from panel



- S20** Unlock 22 screws to disassemble Middle Frame

Disassemble Middle Frame from panel.



(Screw Torque: 3.5~4.0 Kgf)

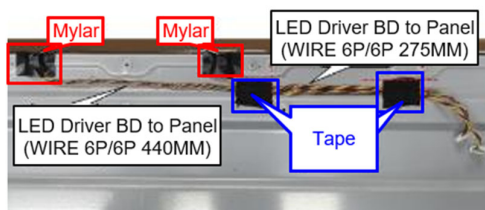
- S21** Disassemble 7 panel boss from panel.



- S22** Tear off two tapes from “LED Driver BD to Panel wires”

Tear off 2 Mylar from the connectors
(See red mark)

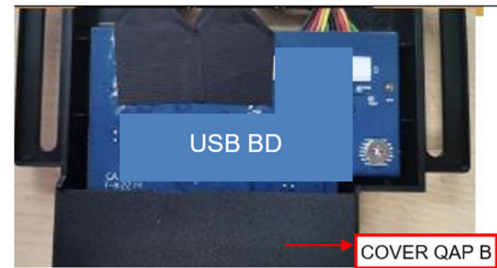
Unplug 2 “LED Driver BD to Panel wires” from panel



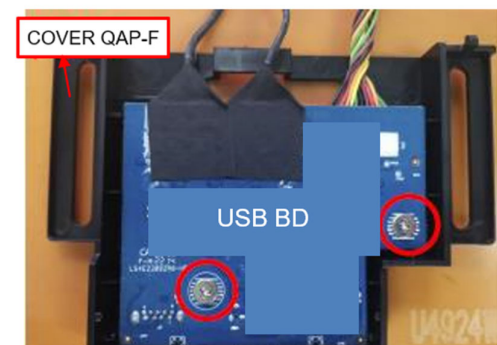
- S23** Tear off logo from panel



- S24** Disassemble “COVER QAP B” from “COVER QAP-F”

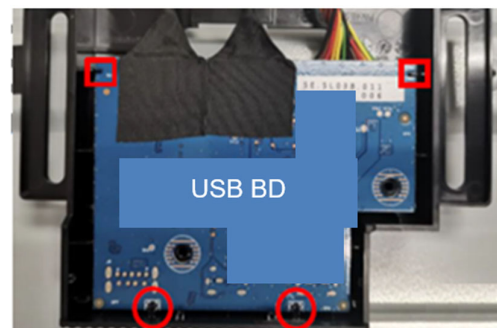


- S25** Unlock 2 screws to disassemble USB BD

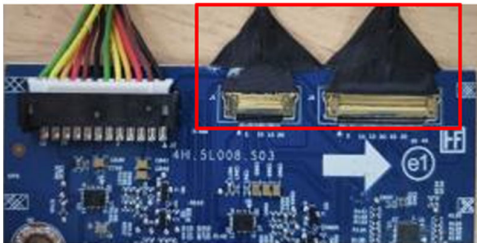
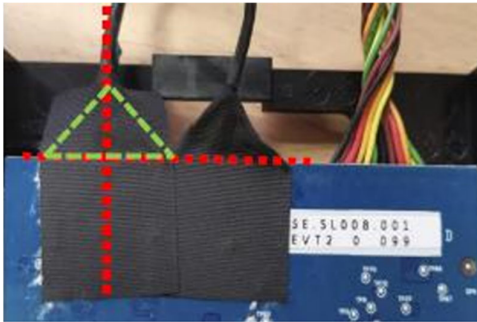


(Screw Torque: 4.0~4.5 Kgf)

- S26** Disassemble USB BD from “COVER QAP-F”

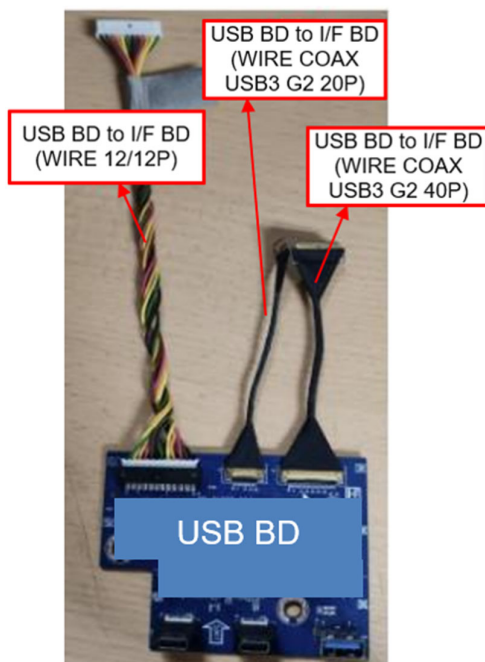


- S27** Tear off 2 tapes from USB BD and USB wires as picture shown

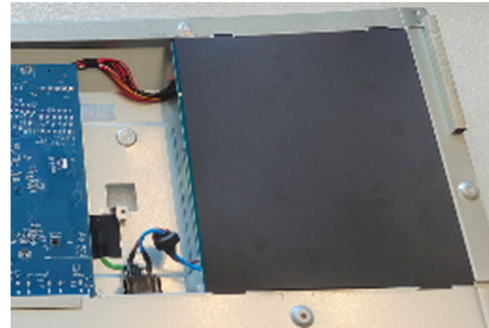


- S28** Unplug following wires from USB BD

- WIRE 12/12P
- WIRE COAX USB3 G2 40P
- WIRE COAX USB3 G2 20P



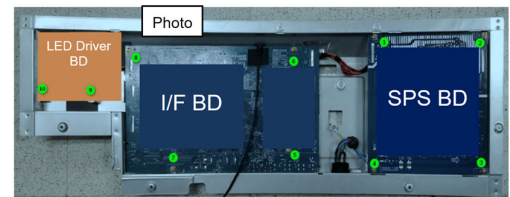
- S29** Disassemble Mylar from Main SHD



- S30** Unlock 10 PCBA screws

Disassemble LED Driver BD from Main SHD.

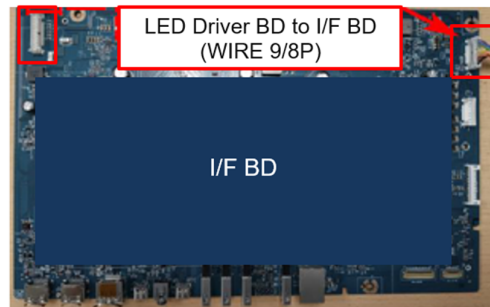
Unplug "LED Driver BD to I/F BD wire" from LED Driver BD



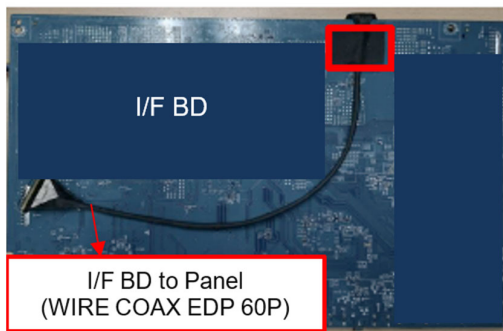
- S31** Disassemble I/F BD from Main SHD.



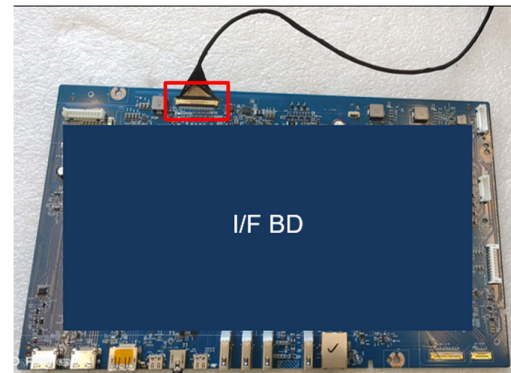
- S32** Unplug “LED Driver BD to I/F BD wire” and “SPS BD to I/F BD wire” from I/F BD.



- S33** Tear off a tape from “WIRE COAX EDP 60P”

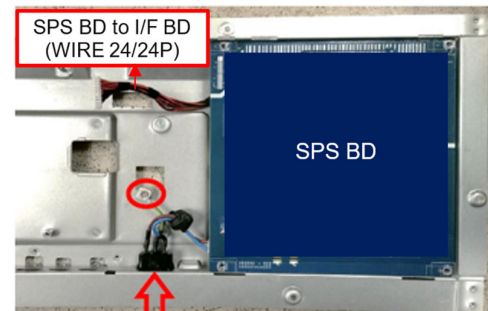


- S34** Unplug “WIRE COAX EDP 60P” from I/F BD

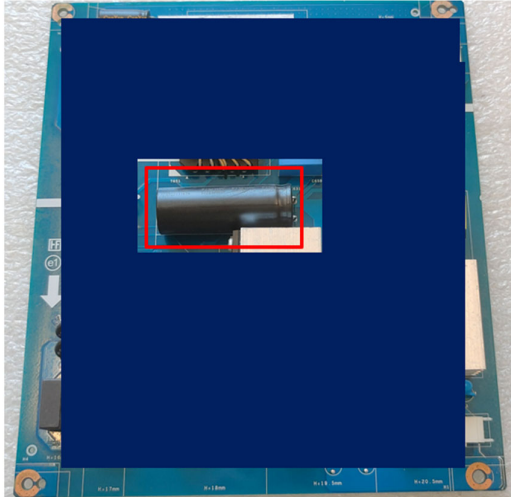


- S35** Unplug “SPS BD to I/F BD wire” and “WIRE AC+3/3P” from SPS BD, then, disassemble SPS BD from Main SHD

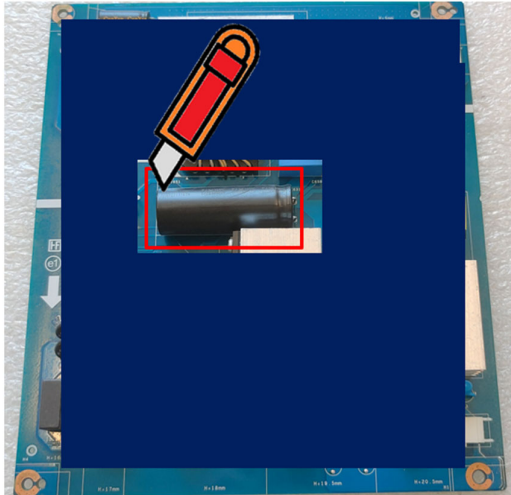
Unlock a screw and disassemble
“WIRE AC+3/3P” from Main SHD



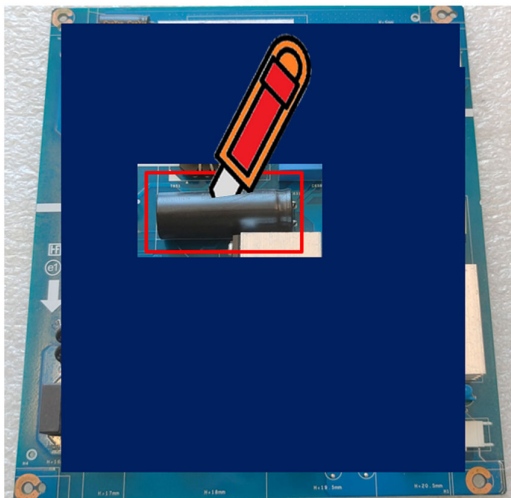
S36 Remove electrolyte capacitors (red mark) from printed circuit boards



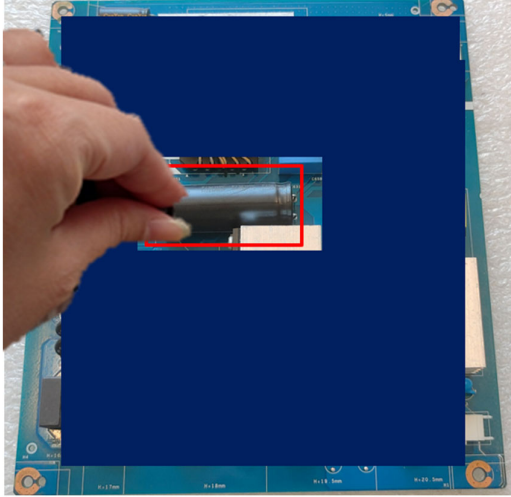
S36-1 Cut the glue between bulk cap. and PCB with a knife



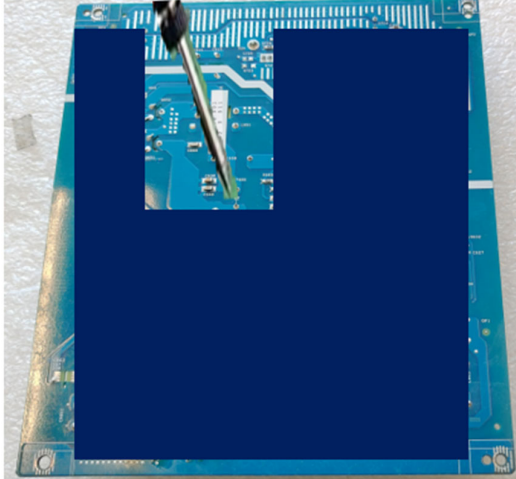
S36-2 Ensure cutting path within the glue, don't touch bulk cap. or PCB



S36-3 Take out bulk cap. pin solder with soldering iron and absorber



S36-4 Lift the bulk cap. up and away from the PCB



2. Product material information

The following substances, preparations, or components should be disposed of or recovered separately from other WEEE in compliance with Article 4 of EU Council Directive 75/442/EEC.

Capacitors / condensers (containing PCB/PCT)	No used
Mercury containing components	No used
Batteries	No used
Printed circuit boards (with a surface greater than 10 square cm)	Product has printed circuit boards (with a surface greater than 10 square cm)
Component contain toner, ink and liquids	No used
Plastic containing BFR	No used
Component and waste contain asbestos	No used
CRT	No used
Component contain CFC, HCFC, HFC and HC	No used
Gas discharge lamps	No used
LCD display > 100 cm ²	Product has an LCD greater than 100 cm ²
External electric cable	Product has external cables
Component contain refractory ceramic fibers	No used
Component contain radio-active substances	No used
Electrolyte capacitors (height > 25mm, diameter > 25mm)	Product has electrolyte capacitors (height >25mm, diameter > 25mm)

3. Tools Required

List the type and size of the tools that would typically can be used to disassemble the product to a point where components and materials requiring selective treatment can be removed.

Tool Description:

- Philips-head Screwdriver
- Penknife
- Bar scraper
- U4919DW curve sponge jig